



# BEK Systemtechnik

## Company Profile

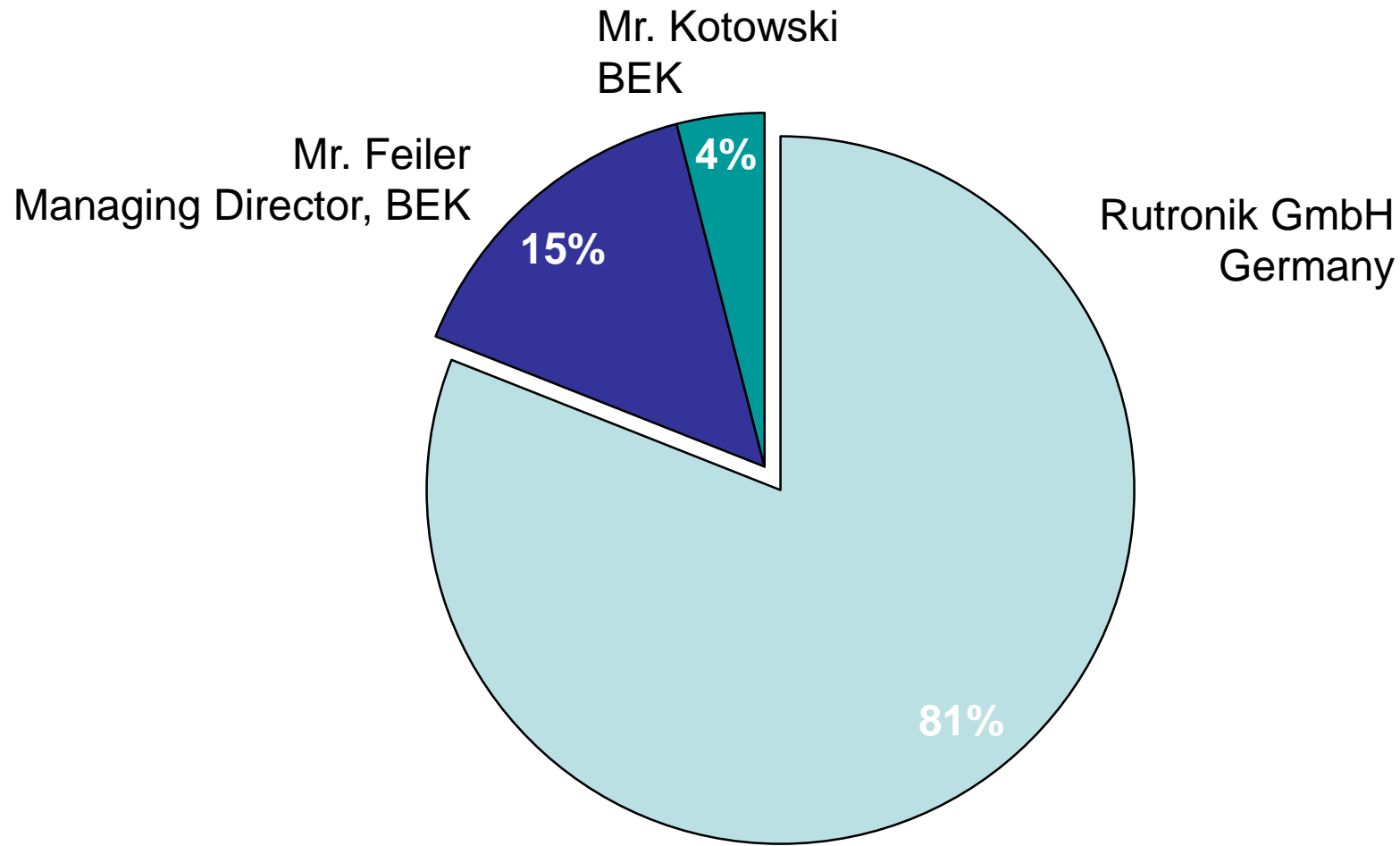
May 2020

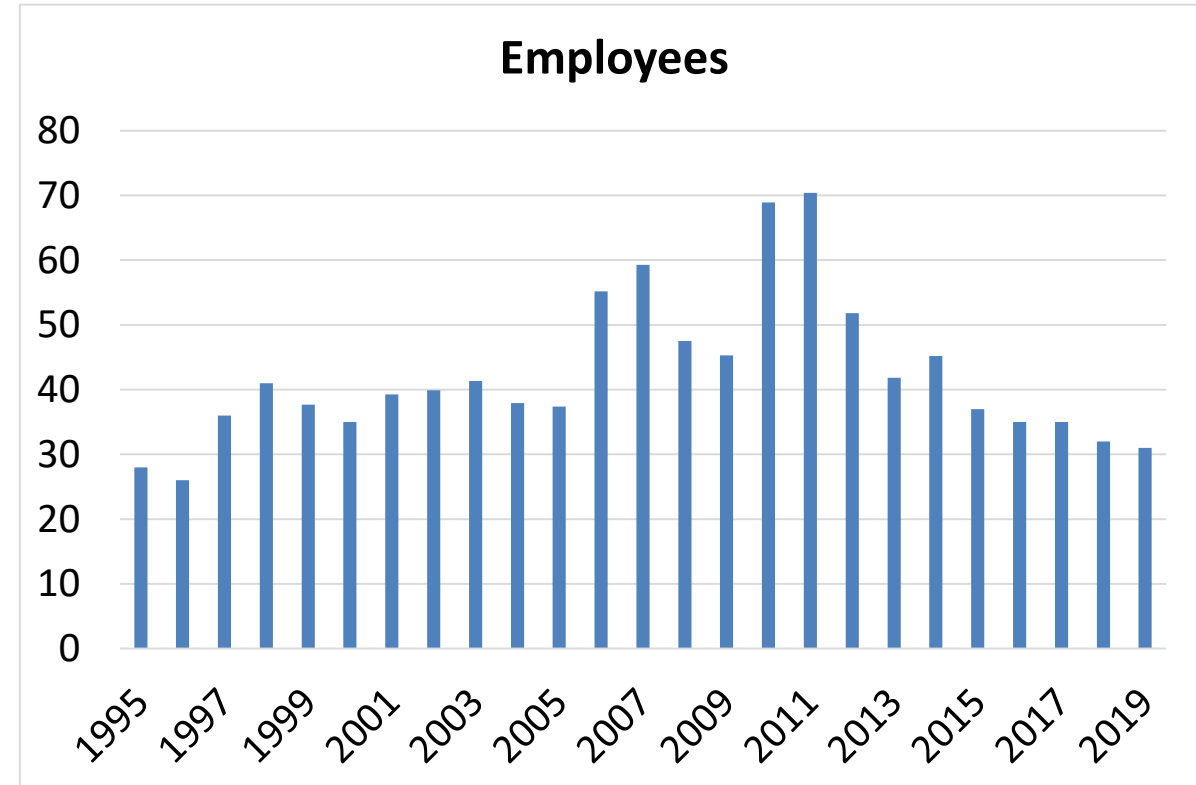
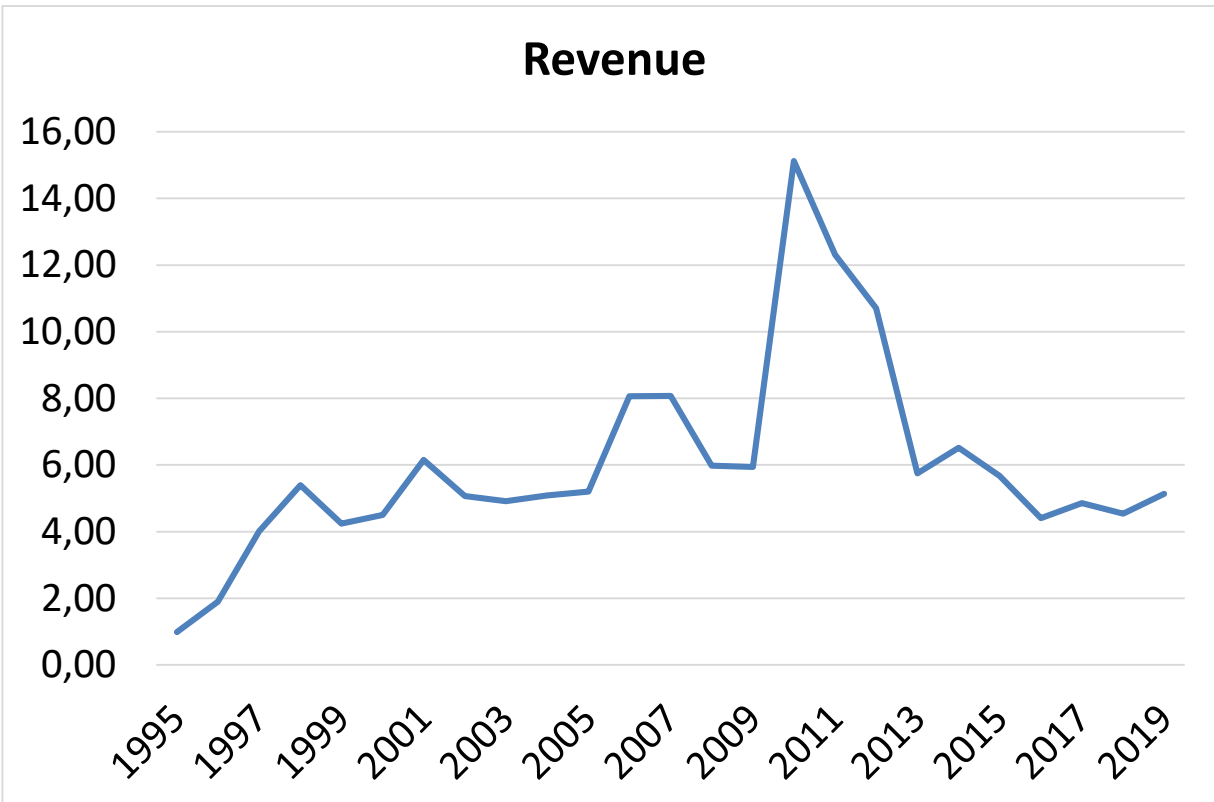
- 1983 Starting with Electronic Manufacturing at VEB Elektroprojekt Berlin
- 1995 **Foundation** of BEK Systemtechnik
- 1997 Duplication Manufacturing Area
- bis 2003 New N<sub>2</sub> soldering unit for wave soldering process  
New Reflow-Soldering Machine and SMD- Assembly Units
- 2005/06 New Business-Unit for Inter Circuits Programming Service for  
Microcontrollers, Memories, etc.
- 2007 Set-Up Incircuit- and Functiontest-System, Reinhardt ATS-KMFT-670M-2
- 2008 Upgrade SMD- Reflow-System 2009
- 2010 New acquisition of a N<sub>2</sub> wave soldering machine fully encapsulated
- 2018/19 Installation of second climate chamber, Feutron TPK200
- today Shareholders' resolution for the strategic reorientation of BEK  
Systemtechnik (new building and investment in machinery)

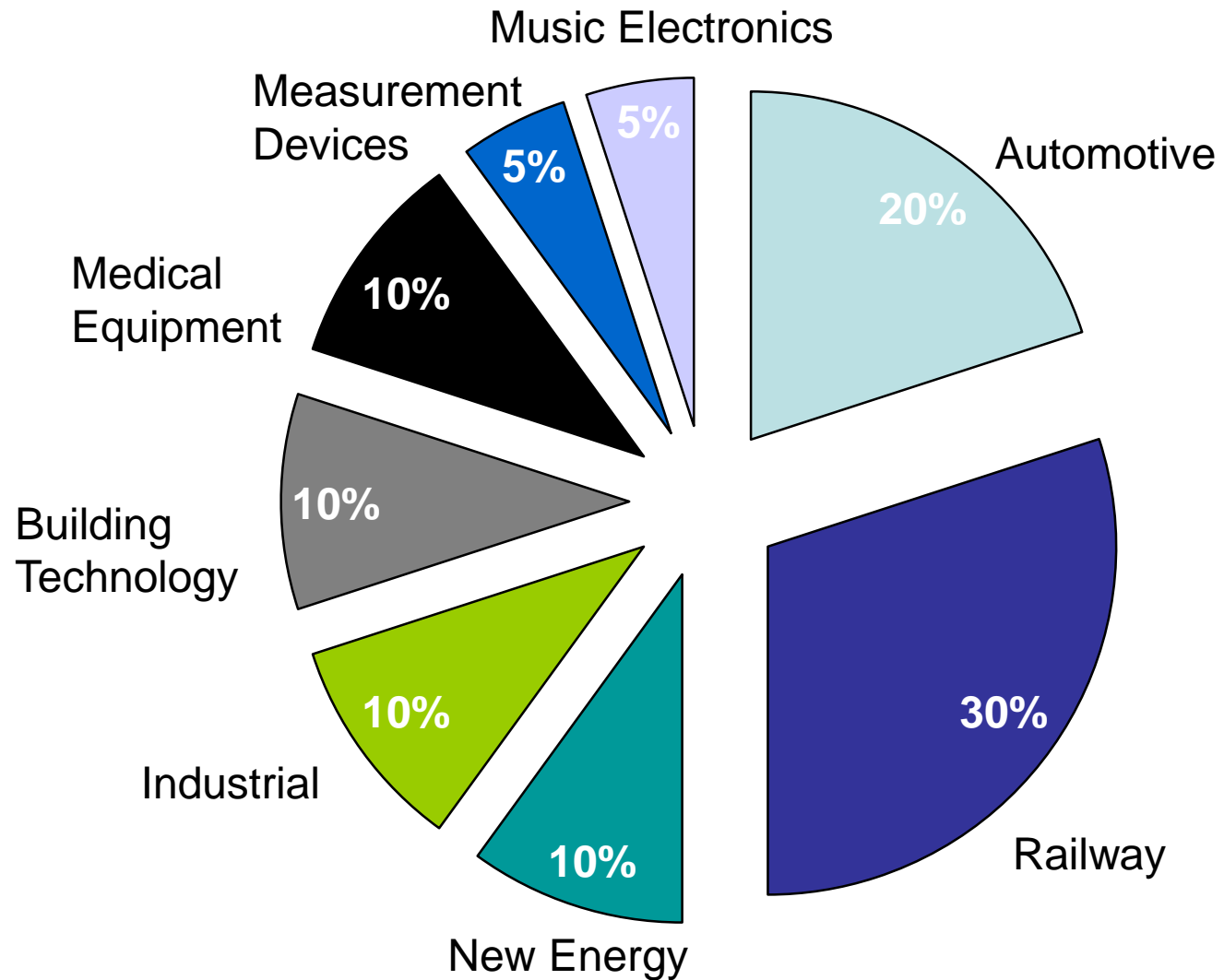


# BEK Systemtechnik

## Shareholders











# BEK Systemtechnik

## Our Competences

---

- Manual and automatic assembly of electronic components
- Complete production of assemblies in through-hole, mixed and SMD technology with machine soldering in a reflow continuous furnace or on a double wave soldering machine
- Press-in of contact pins and connector strips
- Painting of electronic assemblies
- Assembly of complete devices
- Optical inspection and electrical testing of components and complete devices
- Burn-in tests, temperature change tests in our climate chambers
- Procurement of components and provision of printed circuit boards on customer request
- Layout creation according to your circuit diagram
- Sample assembly, individual production, series production
- Inter Circuit Programming Service
- Stable and reliable supply chain, logistics
- Environmental Protection and Packaging Recycling



### **General**

- maximum circuit board dimensions: 450 x 400 mm (larger dimensions are possible by agreement)
- fully automatic equipping
- short processing times in production and testing
- all workstations are ESD-protected
- universally applicable means of transport for the production flow
- customized packaging

### **Component Preparation**

- Preparation of all commercial components for manual assembly with devices and tools
- automatic devices for beading, cutting and bending axial and radial taped components
- mechanical devices for preparing bulk material or special types of components

### **Manual Assembly**

- Universal assembly workstations and repair workstations for sample assemblies and small series
- Placement and assembly workstations on the conveyor belt (linked with double wave soldering machine) for series production

### Programmable circuit types:

- microcontrollers, memory, logic devices, crystals

### Testing:

- Continuity Check
- Check Sum
- Blank Check, Device Check
- Misinsertion
- Compare Check
- Function Test
- Backward Device

### Advantages at a glance:

- Cost-effective
- Fully automatic
- Laser marking
- Much faster than by hand
- Minimized handling errors
- Components, logistics and support - all from one source





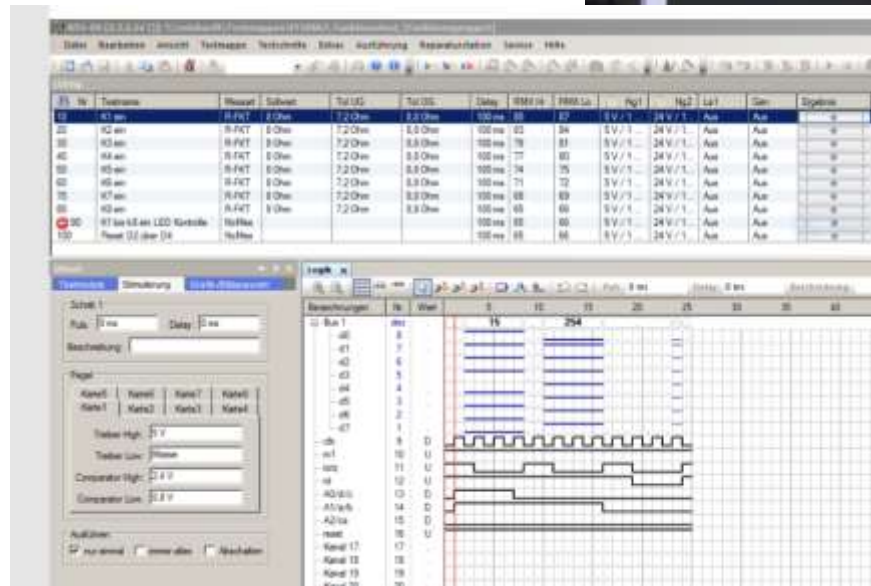
- Placement in adhesive or solder paste, interlinking with full convection oven
- Screen printing placement in solder paste, interlinking with full convection oven
- spectrum of components:
  - rectangular chips 0201 to 2225
  - melf, minimelf
  - SOT 23, SOT 89
  - QFP up to 0.4 pitch
  - BGA,  $\mu$ BGA
  - Special designs
- smallest mountable package 01005 QFP, QFN, BGA,  $\mu$ BGA from 0,4mm pitch
- automatic bad PCB detection
- optical correction system
- Boardloader and in-line transport chaining
- Maximum circuit board size for SMD assembly 905 \* 590 mm



- Wave soldering machine for SMD and through-hole technology (lead-free and leaded)
- Options:
  - Inclined transport
  - Spray fluxer Density measuring
  - correction system
- Full convection reflow soldering machine
- 100% N2 use for machine soldering



- Visual inspection with automatic optical inspection (Orbotech) + Quins Easy
- Manual inspection with Vision "Mantis" PCB inspection device
- In-Circuit-Test with Reinhardt Multifunctiontest-system ATS-KMFT-670M-2
- Function Testing with Reinhardt Multifunctiontest-system ATS-KMFT-670M-2





- Burn-in tests
- Thermal shock tests
- Active and passive

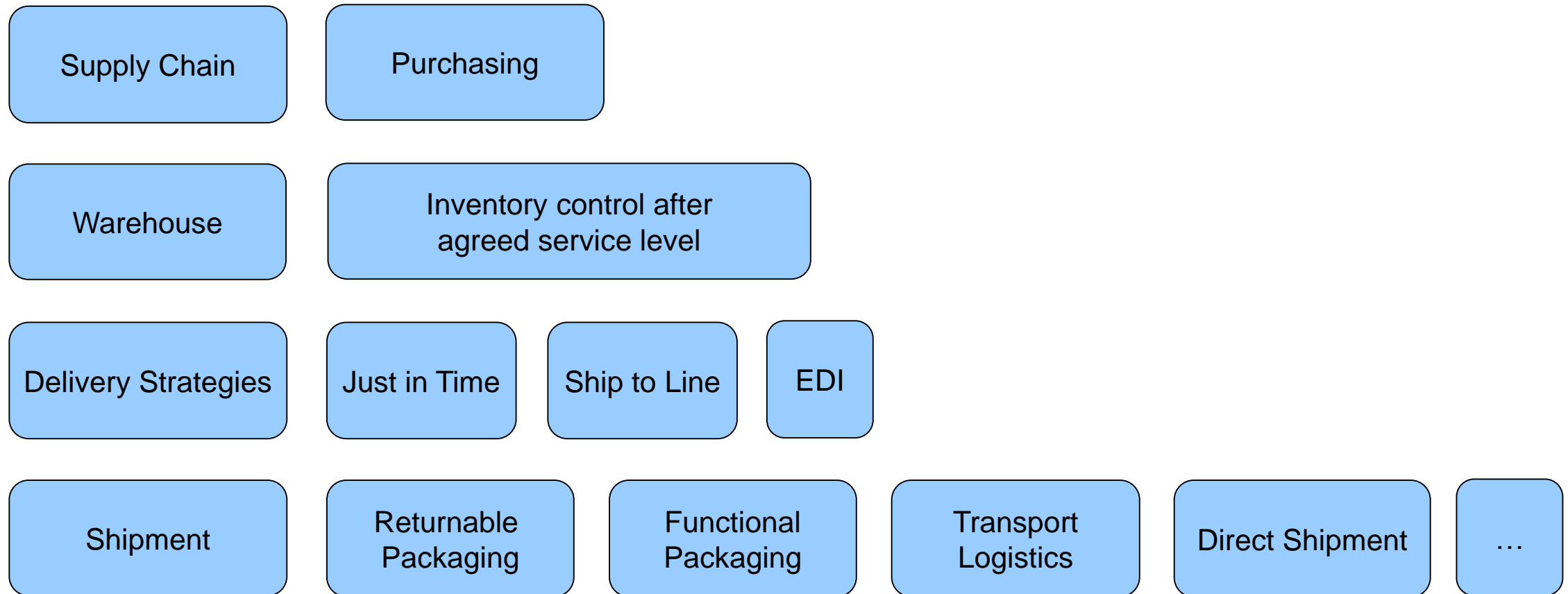


Our scope of services includes:

- employees trained according to IPC-A-610 standard
- Checking the printed circuit board data (layout problems etc.)
- Check according to design rules, check component arrangements
- component-related evaluation of pad sizes
- Checking the polarity or orientation of components
- Assembly illustration and visualization of problems before production start
- reliable preparation of all production data (SMD, AOI, selective)
- Consideration of test specifications and repair conditions
- Participation in the concept for electrical and functional testing















- Reliable partner for EMS services of our customers
- Competent advice
- Stable supply chain
- Unconditional quality
- High delivery reliability and ability to meet delivery dates
- Flexible and competent service
- Aftersales support






# BEK Systemtechnik

Your Contact

## BEK Systemtechnik

Bürknersfelder Str. 5b  
13053 Berlin

 +49 30 98190222

+49 30 97999788

 [BEK@Rutronik.de](mailto:BEK@Rutronik.de)



visit our homepage  
[www.BEK-Systemtechnik.de](http://www.BEK-Systemtechnik.de)